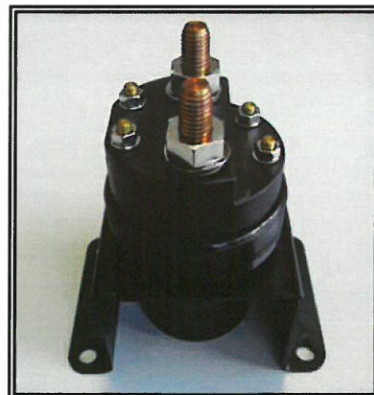


TECHNICAL DATA SHEET

Ref. 530002

UNIPOLAR ELECTROMAGNETIC BATTERY
MASTER SWITCH w/ AUXILIARY CIRCUIT D+
12VDC / 300A



GENERAL CHARACTERISTICS

Protection degree: IP65
Ambient temperature: -40°C to +80°C
Weight: 1.2 Kg approx.
Contacts: Double cut copper
Connections: not polarized
Is working in all positions

FIELDS OF APPLICATION

Handling vehicles, industrial vehicles,
agriculture machinery...

CONTROL CIRCUIT

Appeal current: 7 A (ms)
Bearing current: 0,3 A
Absorbed power from the coil: 6 W
Guaranteed interlocking tension: 9 V
Disengaging tension: ≤ 4 V
Connections by M5 terminals
Tightening torque: 0.4 +/- 0.2 daN·m

POWER CIRCUIT

Connection: M10 terminals
Tightening torque: 1.4 +/- 0.2 daN·m
Type: normally open unipolar
Max. using tension: 48 V
Capacity:
300 A in continuous
2400 A during 1 second
600 A during 20 seconds

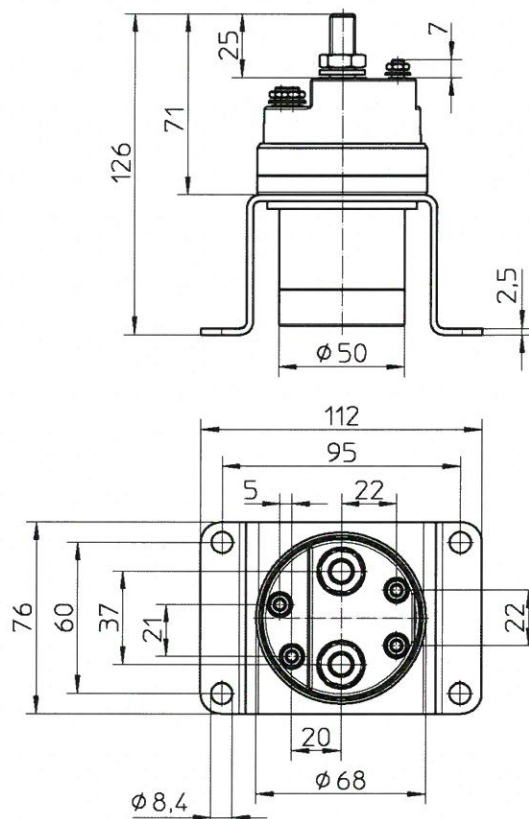
PARTICULAR CHARACTERISTICS:

Black galvanised finishing.
Corrosion test: 200 h salt spray resistance

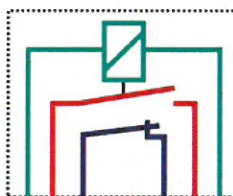


P.I. El RAÍQUER, C/ El RAÍQUER, s/n, NAVE Nº21-22
08170 MONTORNÈS DEL VALLÈS
BARCELONA (SPAIN)
TEL. : + 34.93.544.44.80 - FAX : + 34.93.544.44.90
WWW.CORMAR.ES - info@cormar.es

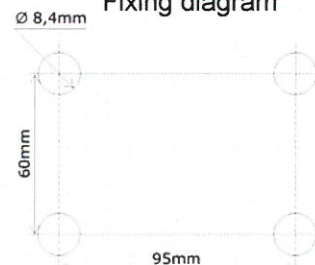
Size diagrams



Connection diagram



Fixing diagram



AUXILIARY CIRCUIT

For alternator with incorporated controller unit
Independent Normally Closed unipolar
Capacity: 10 A
Put to earth the D+ circuit before cutting the principal one
Connections by M5 terminals
Tightening torque 0.4 +/- 20% daN·m