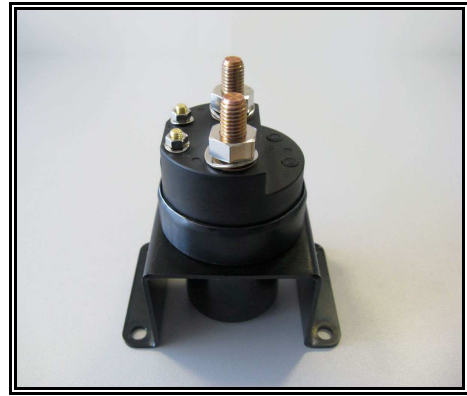


TECHNICAL DATA SHEET  
**Ref. 1100-9801**  
 UNIPOLAR ELECTROMAGNETIC  
 BATTERY MASTER SWITCH  
 24VDC / 300A



GENERAL CHARACTERISTICS

Protection degree: IP65  
 Ambient temperature: -40°C to +80°C  
 Weight: 1.2 Kg approx.  
 Contacts: Double cut copper  
 Connections: not polarized  
 Is working in all positions

FIELDS OF APPLICATION

Handling vehicles, industrial vehicles,  
 agriculture machinery, industry...

CONTROL CIRCUIT

Breakaway starting current: 4.5 A (20 ms)  
 Holding current: 0,25 A  
 Absorbed power from the coil: <6 W  
 Guaranteed interlocking tension: 18 V  
 Disengaging tension:  $\leq 6$  V  
 Connections by M5 terminals  
 Tightening torque: 0.4 +/- 0.2 daN·m

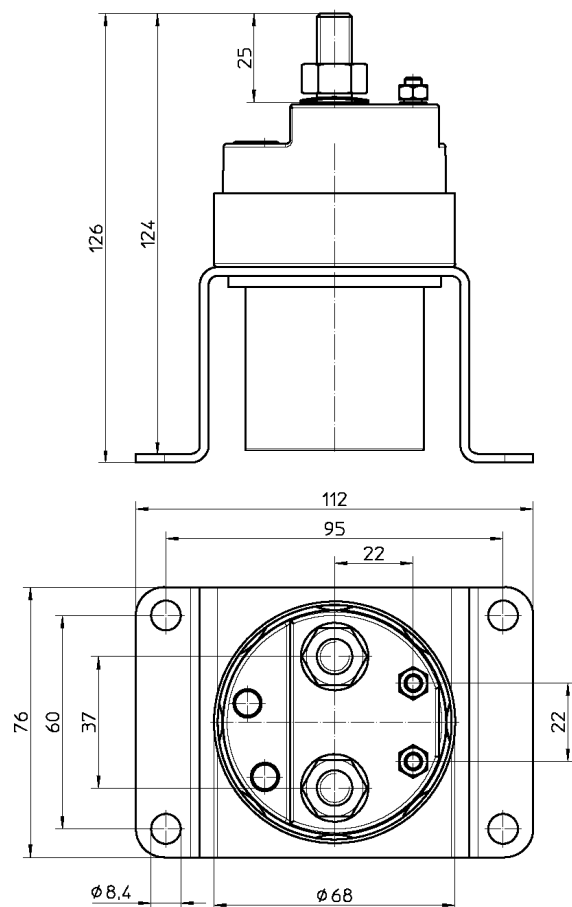
POWER CIRCUIT

Connection: M10 terminals  
 Tightening torque: 1.4 +/- 0.2 daN·m  
 Type: normally open unipolar  
 Max. using tension: 48 V  
 Capacity:  
 300 A in continuous  
 2400 A during 1 second  
 600A during 20 seconds.

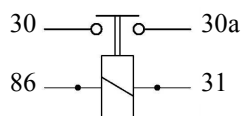
PARTICULAR CHARACTERISTICS:

Black galvanised finishing.  
 Corrosion test: 200 h salt spray resistance

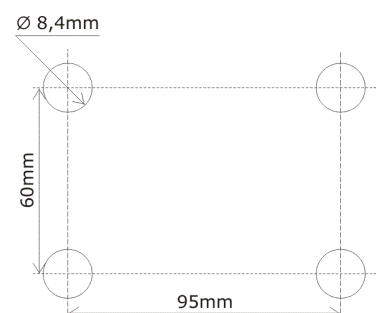
Size diagrams



CIRCUIT:



Fixing diagram



Maahantuoja:

Startax Auto-Electronics Oy

Kannistontie 138, 33880 Lempäälä | puh. (03) 275 050 fax. (03) 275 0555

www.startax.net