

**TECHNICAL DATA SHEET**  
**Ref. 1000-0037**  
**UNIPOLAR BATTERY**  
**MASTER SWITCH**  
**24VDC / 250A**

**GENERAL CHARACTERISTICS**

Protection degree: IP665  
 Ambient temperature: -40°C to +85°C  
 Weight: 0.562 Kg approx.  
 Contacts: Copper  
 Connections: not polarized

**FIELDS OF APPLICATION**

Handling vehicles, industrial vehicles,  
 agriculture machinery, industry...

**POWER CIRCUIT**

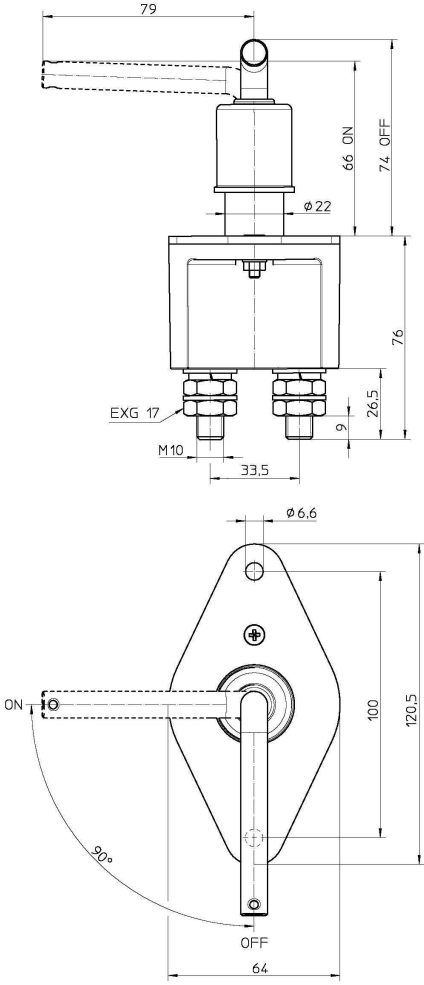
Connection: M10 terminals  
 Tightening torque: 1.5 +/- 0.1 daN·m  
 Type: D1 normally open  
 Nominal current: 250 A  
 Nominal voltage: 24 VDC  
 Max. capacity: 2500 A during 5 seconds

**PARTICULAR CHARACTERISTICS:**

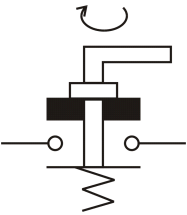
Removable handle



**Size diagrams**



**Connection diagram**



**Fixing diagram**

