

## TECHNICAL DATA SHEET

# Ref. 1100-9804

## UNIPOLAR ELECTROMAGNETIC BATTERY MASTER SWITCH 12VDC / 300A



### GENERAL CHARACTERISTICS

Protection degree: IP65  
Ambient temperature: -40°C to +80°C  
Weight: 1.2 Kg approx.  
Contacts: Double cut copper  
Connections: not polarized  
Is working in all positions

### FIELDS OF APPLICATION

Handling vehicles, industrial vehicles,  
agriculture machinery, industry...

### CONTROL CIRCUIT

Breakaway starting current: 7 A (20 ms)  
Holding current: 0,3 A  
Absorbed power from the coil: 6 W  
Guaranteed interlocking tension: 9 V  
Disengaging tension:  $\leq 4$  V  
Connections by M5 terminals  
Tightening torque: 0.4 +/- 0.2 daN·m

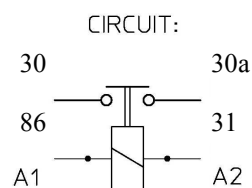
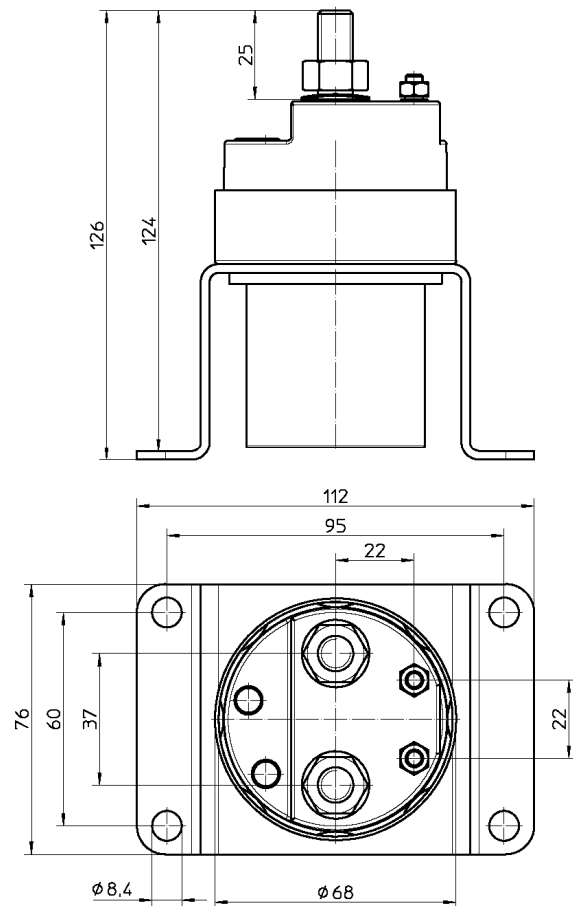
### POWER CIRCUIT

Connection: M10 terminals  
Tightening torque: 1.4 +/- 0.2 daN·m  
Type: normally open unipolar  
Max. using tension: 48 V  
Capacity:  
300 A in continuous  
2400 A during 1 seconds  
600A during 20 seconds

### PARTICULAR CHARACTERISTICS:

Black galvanised finishing.  
Corrosion test: 200 h salt spray resistance

### Size diagrams



### Fixing diagram

